



# CD2AP in Alzheimer's disease: Key mechanisms and therapeutic potential

 Yong Wang<sup>1</sup> , and Yun-wu Zhang<sup>1</sup> 

**Alzheimer's disease affects millions worldwide as one of the most devastating neurodegenerative conditions, characterized by two distinct pathological features: amyloid plaques (composed of clustered  $\beta$ -amyloid peptides) and neurofibrillary tangles (made of hyperphosphorylated Tau protein). These hallmark changes trigger a cascade of events, including progressive synaptic dysfunction, inflammation, and the breakdown of the protective blood–brain barrier. Recent breakthrough research through genome-wide association studies has identified CD2-associated protein (CD2AP) as a significant risk factor in developing Alzheimer's disease, with this crucial adaptor protein emerging as a key player in several disease mechanisms due to its fundamental role in cellular transport and cytoskeletal architecture. Growing evidence reveals that CD2AP influences multiple aspects of Alzheimer's disease pathogenesis, from  $\beta$ -amyloid metabolism and deposition to Tau-mediated neurotoxicity, synaptic integrity, blood–brain barrier function, and microglial activation states. Understanding CD2AP's physiological and pathological roles in the nervous system, particularly its cell type-specific functions, is crucial for developing effective therapeutic strategies that target CD2AP levels for Alzheimer's prevention and treatment, requiring a comprehensive understanding of CD2AP biology in neuronal cells.**

*Brain Medicine* March 2025;1(2):38–45; doi: <https://doi.org/10.61373/bm025i.0026>

**Keywords:** Alzheimer's disease,  $\beta$ -amyloid, blood–brain barrier, CD2-associated protein, microglia, neuroinflammation, synapse, Tau

Alzheimer's disease (AD) is a neurodegenerative disease characterized by impairments in cognitive functions, especially in learning and memory. The primary pathological features observed in the brain tissues of deceased patients with AD include extracellular amyloid plaques composed of  $\beta$ -amyloid (A $\beta$ ) peptides and intracellular neurofibrillary tangles (NFTs) formed by hyperphosphorylated Tau proteins (1). Due to an aging society worldwide, the number and proportion of people with AD or other dementias are expected to grow in the coming years. In 2019, some 55 million people were estimated to have dementia across the world, a figure predicted to increase to 139 million by 2050, according to the WHO. The annual cost of dementia was estimated to be US \$1.3 trillion in 2019, with this figure expected to more than double by 2030 to \$2.8 trillion (2).

AD can be classified into early-onset Alzheimer's disease (EOAD) and late-onset Alzheimer's disease (LOAD) based on the age of onset (before or after 65 years old), with EOAD accounting for 5%–10% of the incidence (3). Studies indicate that EOAD is often linked to familial genetic mutations, particularly in the genes encoding  $\beta$ -amyloid precursor protein (APP), presenilin-1 (PS1), and presenilin-2 (PS2) (4, 5). In contrast, the majority of LOAD cases are typically sporadic and associated with multiple factors, including environmental influences. Since the identification in 1993 of the Apolipoprotein E (APOE)  $\epsilon$ 4 allele as a significant genetic risk factor for LOAD (6, 7), genome-wide association studies (GWAS) have uncovered additional genes related to LOAD, such as *TREM2*, *BIN1*, *MS4A4*, *CD33*, and *CD2AP* (8–10). *CD2AP* encodes CD2-associated protein (CD2AP), also referred to as Cas ligand with multiple SH3 domains (CMS) (8–11). In this article, we provide a concise review on the latest research advancements concerning the functional role of CD2AP in AD.

## CD2AP Introduction

The human *CD2AP* gene is located on chromosome 6 and comprises 18 exons (Figure 1A). It encodes a protein consisting of 639 amino acids with a molecular weight of approximately 71 kDa. The mouse *Cd2ap* gene is located on chromosome 17 and contains 18 exons, encoding a protein of 637 amino acids. The CD2AP protein is a scaffold protein that was initially

identified due to its interaction with the transmembrane protein CD2 in T cells. This interaction facilitates CD2 clustering and stabilizes the connection between T cells and antigen-presenting cells, leading to its naming in 1998 (12).

CD2AP is primarily composed of three consecutive SH3 domains near the N-terminus, a proline-rich region in the middle, and a coiled-coil domain at the C-terminus [Figure 1A, with the three-dimensional structure of CD2AP derived from AlphaFold 3 (13, 14)]. The SH3 domains of CD2AP specifically recognize target protein sequences composed of extended polyproline type II helices. They are essential for CD2AP interaction with various cellular components, including cytoskeletal regulators, multiple signaling molecules, and apoptosis regulatory factors (15–17). The central proline-rich region of CD2AP mediates ligand-dependent interactions with actin-binding proteins, facilitating their recruitment to endocytic CD2AP-Cbl-epidermal growth factor receptor complexes (18). The C-terminal coiled-coil domain of CD2AP is indispensable for its actin-binding capability, as this region contains a conserved sequence of approximately 20 residues, known as the CARMIL peptide that specifically interacts with actin-capping protein (CP). This interaction enables CP to bind to the barbed ends of actin filaments, thereby capping the filaments and regulating actin monomer addition and loss. Furthermore, the C-terminal region of CD2AP contains specific binding sites for membrane proteins such as nephrin and podocin, highlighting its multifunctional role in cellular processes (19–23).

CD2AP is expressed throughout the body, with relatively high levels in the stomach, duodenum, colon, and kidneys. CD2AP is particularly enriched in podocytes of the glomeruli (24). In glomerular cells, CD2AP plays a crucial role by interacting with proteins such as nephrin and podocin at the slit diaphragm, anchoring these proteins to the actin cytoskeleton. This interaction is essential for maintaining the function of podocytes and the slit diaphragm during the glomerular filtration process (25, 26). CD2AP is indispensable for normal glomerular function. Mice with a complete knockout of the *Cd2ap* gene exhibit progressive glomerular dysfunction due to the loss of podocyte foot process integrity and typically die of renal failure within 6 to 7 weeks after birth (27).

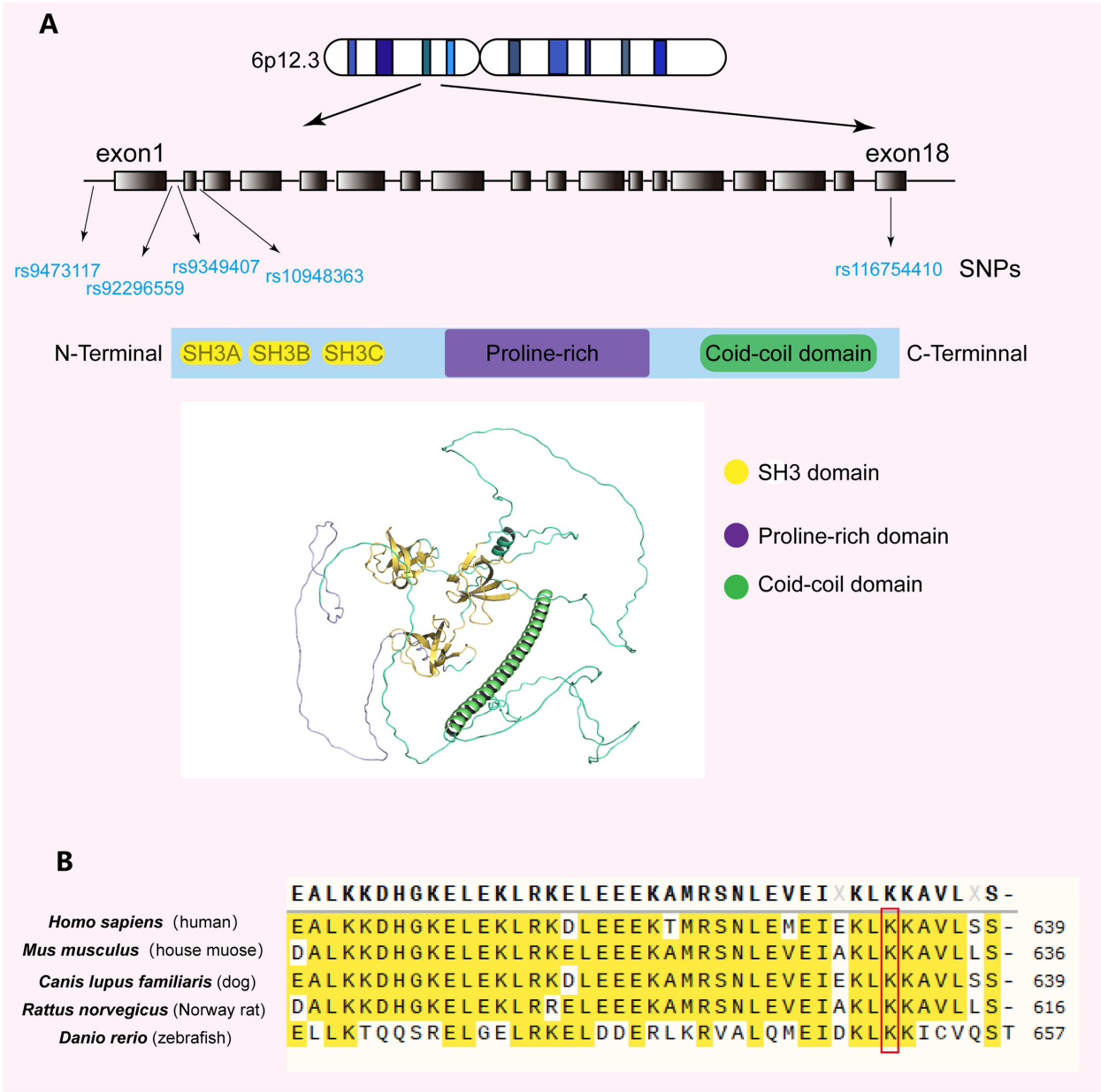
<sup>1</sup>Fujian Provincial Key Laboratory of Neurodegenerative Disease and Aging Research, Institute of Neuroscience, School of Medicine, Xiamen University, Xiamen, Fujian 361102, China

**Corresponding Author:** Yun-wu Zhang, Fujian Provincial Key Laboratory of Neurodegenerative Disease and Aging Research, Institute of Neuroscience, School of Medicine, Xiamen University, Xiamen, Fujian 361102, China. E-mail: [yunzhang@xmu.edu.cn](mailto:yunzhang@xmu.edu.cn)

Received: 5 February 2025. Revised: 25 February 2025. Accepted: 28 February 2025.

Published online: 18 March 2025.





**Figure 1.** The scheme of CD2AP. (A) Human CD2AP gene and CD2AP protein. The CD2AP gene is located on chromosome 6p12.3 and has 18 exons. The CD2AP protein contains three SH3 domains, a proline-rich domain and a coil-coil domain. The three-dimensional structure of CD2AP is derived from AlphaFold 3. SNPs associated with AD are listed. (B) Comparison of CD2AP sequences of different species around K633 (highlighted by a red box).

CD2AP also participates in tumor growth but shows diverse effects in different cancers. For example, CD2AP was found to display a specific expression pattern in human urogenital organs but with distinct expression patterns in several types of kidney tumors (28). Another study revealed a reduction of CD2AP expression in renal clear cell carcinoma (ccRCC) and an association of lower CD2AP expression level with worse patient prognosis, implicating that CD2AP may be a prognostic biomarker for ccRCC (29). In addition, CD2AP was found to form a scaffold protein complex with TKS4 for regulating the migration and epithelial-mesenchymal transition pathways of HCT116 colon cancer cells (30). Furthermore, CD2AP could promote cell adhesion and influence cytoskeletal assembly by interacting with the protein CAPZA1, thereby regulating the metastasis of gastric cancer cells (31). Recently, we also revealed that CD2AP was upregulated in glioblastoma, in which CD2AP could enhance the NF- $\kappa$ B signaling by interacting with TRIM5, thereby promoting the malignant behavior of glioblastoma (32).

Since the identification of the association between CD2AP and AD, the function of CD2AP in the brain has been attracting more and more attention. The mRNA data from the Allen Brain Atlas suggest that although CD2AP may be expressed at low levels in neurons, it is relatively enriched in highly plastic brain regions such as the hippocampus, cortex, and cerebellum (33, 34). In addition, high expression of CD2AP was observed in dendritic endosomes of primary cultured mouse neurons (34). Since neurons share morphological similarities with podocytes, as both possess abundant actin-rich projections and have common actin regulators such as synaptopodin and cortactin (35), CD2AP might play a significant role in neurons as it does in podocytes. Indeed, the absence of CD2AP in neurons was shown to cause synaptic damage (36–38). Moreover, we recently discovered that CD2AP was expressed at higher levels in microglia compared to neurons in mice and that CD2AP could regulate microglial activation in response to A $\beta$  toxicity (39). These findings indicate that CD2AP also plays a critical role in the central nervous system.



## Relationship Between CD2AP and AD

### CD2AP Single-Nucleotide Polymorphisms Are Associated with AD

In 2011, Naj *et al.* and Hollingworth *et al.* independently conducted genome-wide association studies (GWAS) using large samples and consistently identified that the single-nucleotide polymorphism (SNP) rs9349407 in *CD2AP* intron 1 significantly associated with LOAD (8, 9). Subsequent replicative studies reported controversial results on the association between rs9349407 and AD, with both positive (40–42) and negative (43–46) correlations suggested. However, most negative studies used relatively small sample sizes. Another work studying deceased individuals who underwent complete neuropathological evaluations found that the rs9349407 locus was related to neuritic plaque pathology (47).

The work by Hollingworth *et al.* further identified that the SNP rs9296559 in *CD2AP* intron 1 was also associated with LOAD (9), and this association was confirmed in the southern Han Chinese population (42). Other studies identified additional SNPs in the *CD2AP* gene to associate with AD, such as rs10948363 in *CD2AP* intron 2 (48, 49) and rs116754410 in *CD2AP* exon 18 (50), of which the latter results in a missense mutation (K633R) in CD2AP. The amino acid K633 is located in the coiled-coil domain of CD2AP, and one recent study found that CD2AP K633R overexpression in neurons could increase spine density and volume. In contrast, its overexpression failed to rescue impaired spine density in CD2AP-deficient neurons (37). Herein, we also evaluated the conservation of K633 and found it conserved from humans to zebrafish (Figure 1B), further implicating the importance of K633 for CD2AP function; this requires further investigation. Moreover, The SNP rs9473117 located upstream of *CD2AP* was reported to be associated with EOAD (51).

### CD2AP Expression Alteration in AD

It was reported that *CD2AP* expression decreased in peripheral blood lymphocytes in patients with LOAD (42). However, we recently noticed that in one proteomic study with large datasets (52), CD2AP protein levels were significantly increased in the brain of patients with AD compared to control subjects and asymptomatic patients with AD (39). We also found that CD2AP levels significantly increased in the hippocampus of the 5xFAD AD model mice at pathological stages but not at pre-pathological stages, and such an increase probably occurred specifically in microglia (39). Our findings implicate that CD2AP alterations in AD occur after pathological changes. Consistent with our results, an earlier study also reported that CD2AP levels were increased in the brain of the APP/PS1 AD model mice (53).

Although several SNPs around *CD2AP* have been reported to be highly associated with AD, only a few studies have explored the effects of some of these SNPs on *CD2AP* expression so far. In a study analyzing human brain gene expression data, researchers found that the minor allele of rs9349407 was only associated with decreased *CD2AP* expression in the cerebellar cortex (54). While the study showed that rs9473117 associates with EOAD, the minor allele of rs9473117 was found to associate with increased *CD2AP* expression in the thalamus and cerebellar cortex (51). In addition, Pavešćević *et al.* leveraged new paired single-nucleus RNA-sequence and whole genome sequencing data and found that the risk variant of rs9473117, together with those of rs7767350 and rs9369716 that are in strong linkage disequilibrium with rs9473117, increases human *CD2AP* mRNA expression in both excitatory and inhibitory neurons, as well as in microglia (36).

### CD2AP Regulates APP Transport and A $\beta$ Production

One major pathological feature of AD is the formation of amyloid plaques composed of A $\beta$ , which is derived from APP through sequential cleavages. First, APP is cleaved by the  $\beta$ -secretase (BACE1) to generate soluble extracellular APP (sAPP $\beta$ ) and a C-terminal fragment (CTF $\beta$ ). APP CTF $\beta$  is then cleaved by the  $\gamma$ -secretase to produce A $\beta$  fragments of 40 or 42 amino acids in length, namely A $\beta$ 40 and A $\beta$ 42 (55, 56). The cleavage of APP is determined by the subcellular localization of APP and its interactions with BACE1 and  $\gamma$ -secretase during membrane, endosome, and lysosome trafficking (57, 58).

CD2AP is an actin-associated adaptor protein that, along with several members of the Rab family, participates in the docking process of

vesicles to target membranes and regulates endosome morphology (19). Several studies have suggested that CD2AP is involved in the intracellular transport and cleavage of APP for A $\beta$  production. Furusawa *et al.* found that overexpression of CD2AP at the cellular level accelerated the transport of APP from early endosomes to late endosomes, thus initiating the degradation process of APP without affecting its degradation rate. In contrast, knocking down CD2AP in cells significantly increased intracellular APP levels (59). Uebelmann *et al.* also showed that CD2AP could keep APP and BACE1 apart in early endosomes in neurons: CD2AP deficiency increased the trapping of APP at the limiting membrane of early endosomes and thus reduced its sorting for degradation in dendrites so that APP and BACE1 had elevated convergence in early endosomes for increased A $\beta$  generation (34). However, Liao *et al.* reported that in the N2a-APP695 cell line, overexpressing APP, knocking down CD2AP reduced cell membrane APP levels and A $\beta$  release and lowered the A $\beta$ 42/A $\beta$ 40 ratio. Moreover, they found that in 1-month-old APP/PS1 mice with complete loss of CD2AP, the A $\beta$ 42/A $\beta$ 40 ratio was decreased. While, CD2AP haploinsufficiency had no effect on A $\beta$  deposition up to 7 months of age in APP/PS1 mice (60). One recent study also reported that in APP/PS1 mice with neuron-specific CD2AP knockout, A $\beta$  levels were not altered at 4.5 months of age (61). Due to the inconsistency in different studies, the specific role of CD2AP in APP processing and A $\beta$  requires further in-depth investigation. Table 1 summarizes reported studies on the effects of CD2AP on APP trafficking/A $\beta$  generation and other AD-related processes.

### CD2AP Modulates Tau-mediated Neurotoxicity

Neurofibrillary tangles formed by hyperphosphorylated Tau protein represent another important pathological feature of AD. In one study using immunohistochemical assays to explore the association between CD2AP expression and AD pathologies in postmortem human brain samples, CD2AP was found not associated with A $\beta$  deposits in vessels or parenchymal plaques. Instead, CD2AP immunodetection in neurons was positively associated with Braak neurofibrillary stage (62). Furthermore, the AD-associated *CD2AP* SNP rs10948363 was found to associate with NFTs (63), the AD-associated *CD2AP* SNP rs9349407 was found to associate with an increase in total Tau protein levels in cerebrospinal fluid, and the rs9381563 variant in *CD2AP* was correlated with changes in phosphorylated Tau levels in cerebrospinal fluid (64).

CD2AP also affects the neurotoxicity caused by Tau. In a fruit fly AD model expressing human Tau, researchers found that knockdown of the *cindr* gene (the human homolog of *CD2AP*) robustly enhanced Tau toxicity (65). Xue *et al.* also found that the specific knockout of CD2AP in neurons in APP/PS1 mice resulted in a significant increase in the phosphorylation levels of endogenous Tau protein. In contrast, the total Tau protein levels remained unchanged (61). Additionally, the deficiency of CD2AP led to elevated P38 phosphorylation levels in these mice. Treatment with P38 phosphorylation inhibitors attenuated the increased phosphorylation of endogenous Tau protein caused by the loss of CD2AP (61). It is known that P38 can phosphorylate Tau (66, 67). However, although some studies consistently reported that high glucose and TGF $\beta$  treatments decreased CD2AP while increased P38 phosphorylation (68, 69) and that CD2AP deficiency enhanced TGF $\beta$ -induced P38 activation (70), the precise mechanism by which CD2AP influences P38 phosphorylation remains unclear and deserves further scrutiny.

### CD2AP Regulates Synaptic Growth and Development

Synapses are the core structures for signal transmission between neurons, and abnormalities in synaptic function are closely linked to cognitive impairment. In the early stages of AD, synaptic dysfunction appears, although the number of synapses does not significantly change at this stage. However, in the mid to late stages of AD, there is a significant loss of synapses and neuronal death, leading to a sharp decline in cognitive abilities (71–76). Ojelade *et al.* found that the *cindr* gene was involved in the development and maturation of synapses during the growth of fruit flies. Mutations in *cindr* disrupted the release and recycling of synaptic vesicles, impairing synaptic plasticity (38). They also noticed decreased levels of some synaptic proteins in CD2AP knockout mice (38). Additionally, they showed that *cindr* interacted with 14-3-3 $\zeta$  to regulate the ubiquitin



**Table 1.** Current knowledge on the contribution of CD2AP to various AD-related processes

Study system	Findings	References
<b>APP and A<math>\beta</math></b>		
Cells (HEK293, COS-7, N2a, neurons)	CD2AP overexpression enhances APP transport from early endosomes to late endosomes and APP degradation. CD2AP knockdown has opposite effects	(59)
Cells (N2a, neurons)	CD2AP knockdown stalls APP at the limiting membrane of early endosomes, increases the encounter of APP and BACE1, and promotes A $\beta$ generation	(34)
N2a-APP695 cells	CD2AP knockdown reduces A $\beta$ 40 and A $\beta$ 42 and A $\beta$ 42/40 ratio, reduces cell surface levels of APP but not total APP	(60)
PS1APP mice with CD2AP KO	No significant change of A $\beta$ 40 and A $\beta$ 42, but decreased A $\beta$ 42/40 ratio in 1-month old mice	(60)
PS1APP mice with CD2AP haploinsufficiency	No significant change of A $\beta$ 40 and A $\beta$ 42 and A $\beta$ plaques at 7 months old. Only decreased PBS-soluble A $\beta$ 42/40 ratio in 7-month-old female mice	(60)
APP/PS1 mice with neuron-specific CD2AP KO	A $\beta$ not altered in 4.5-month-old mice.	(61)
<b>Tau</b>		
Flies expressing human Tau	CD2AP knockdown enhances Tau toxicity	(65)
APP/PS1 mice with neuron-specific CD2AP KO	Increased synaptic deficits and synaptic protein loss at 4.5 months old	(61)
<b>Synapse</b>		
Neurons	CD2AP knockdown reduces spine density and size and neuronal activity	(37)
Neurons	CD2AP knockout disrupts neuronal and synaptic morphology	(36)
Flies	CD2AP deficiency impairs synapse maturation and function	(38)
CD2AP KO mice	Decreased certain synaptic proteins at 5 months old	(38)
CD2AP heterozygous and homozygous KO mice	Abnormal pre-synaptic release with increased paired-pulse facilitation at 5 to 8 weeks old	(36)
CD2AP homozygous KO mice	Perturbation of proteins involved in synaptic function at 5 weeks old	(36)
5xFAD mice with microglial CD2AP haploinsufficiency	Improved synaptic damage at 7 months old	(39)
<b>Microglia</b>		
CD2AP-deficient microglia	Reduced phagocytosis ability	(39)
5xFAD mice with microglial CD2AP haploinsufficiency	Attenuated microgliosis at 7-months old	(39)
<b>Blood-brain barrier (BBB)</b>		
CD2AP KO mice with CD2AP transgene expression in the kidney	Compromised BBB integrity	(85)
<b>Behaviors</b>		
CD2AP heterozygous KO mice	Subtle impairments in discrimination learning at 2.5-months old	(36)
Nestin-Cre mediated brain CD2AP KO mice	No obvious cognitive and motor behavior changes at 3.5- and 12-months old	(36)
APP/PS1 mice with neuron-specific CD2AP KO	Accelerated cognitive deficit onset at 4.5-months old	(61)
5xFAD mice with microglial CD2AP haploinsufficiency	Improved cognitive behaviors at 7-months old	(39)
CD2AP KO mice with CD2AP transgene expression in the kidney	Normal behaviors	(85)

Abbreviation: KO, knockout.

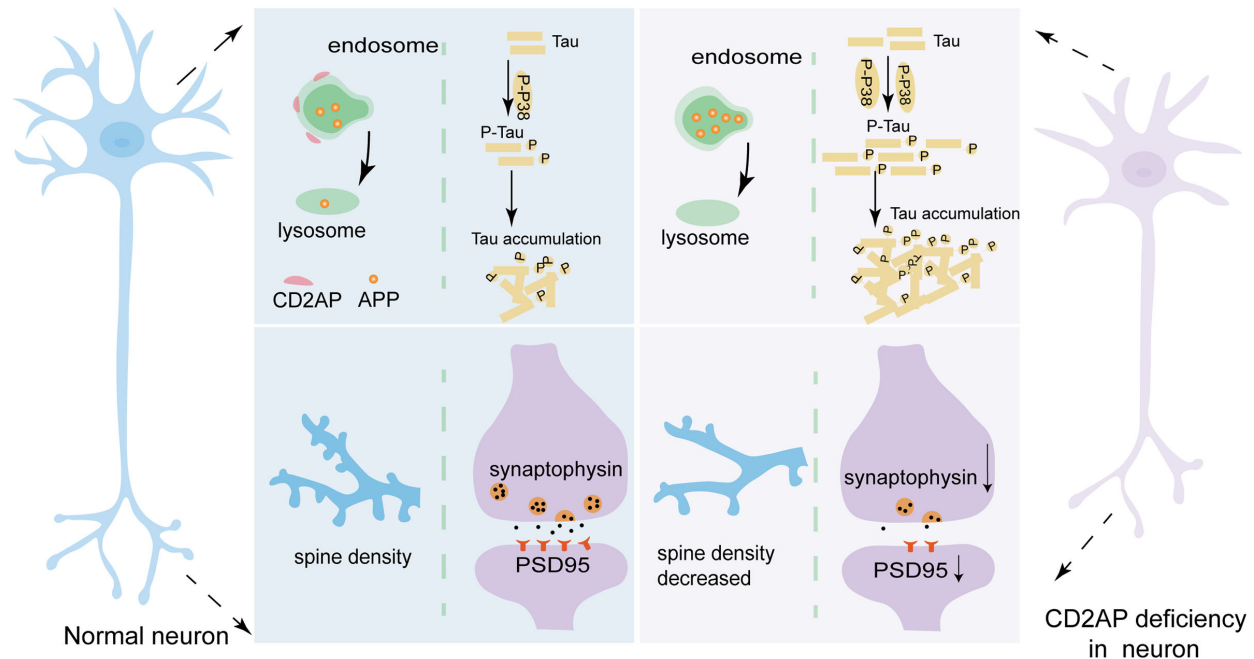
proteasome system, thereby affecting the conversion of synaptophysin and plasma membrane calcium ATPase (PMCA); and the absence of cindr increased PMCA levels and decreased cytosolic calcium (38). Research by Mirfakhhar *et al.* found that CD2AP knockdown in neurons resulted in decreased spine density and size and decreased neuronal activity (37). They also proposed that CD2AP controls the formation and growth of dendritic spines by regulating the balance of F-actin polymerization and depolymerization (37). Pavešković *et al.* also observed a marked reduction in the number of synapses and impaired synaptic plasticity in the hippocampus of CD2AP-deficient mice (36). In addition, CD2AP was suggested to regulate the length and complexity of neuronal axons and the number of filopodia at growth cones through coordinating nerve growth factor signaling (77). Moreover, we recently found that specific deletion of CD2AP in microglia attenuated synaptic damage in 5xFAD mice at pathological stages, though this is attributed to reduced synapse phagocytosis by

CD2AP-deficient microglia (39). These findings collectively suggest that CD2AP plays a crucial role in synaptic development in neurons, and its alteration may contribute to synaptic dysfunction in AD. A summary of the regulation of APP, Tau, and synapses in neurons by CD2AP is illustrated in Figure 2.

**CD2AP Regulates Microglial Activity**

In addition to A $\beta$  plaques and Tau tangles, AD is also characterized by neuroinflammation. Microglia are primary immune cells of the brain and are activated in response to toxicity to exert protective function during the early stages of AD. However, in the later stages of AD, excessively activated microglia can exacerbate disease progression by releasing toxic proinflammatory factors and phagocytosing functional synapses (78–81). CD2AP was initially discovered as a ligand for CD2 in T cells, implicating its significant role in immune cells (12). We recently found that CD2AP





**Figure 2.** Impact of CD2AP function in neurons. CD2AP regulates APP transport from endosomes to lysosomes, Tau phosphorylation, and synapse formation and maintenance in neurons. CD2AP deficiency results in increased APP retention in endosomes for elevated A $\beta$  generation, increased Tau phosphorylation and accumulation, and reduced synapse numbers and synaptic proteins such as synaptophysin and PSD95.

deficiency reduced microglial response to A $\beta$  and microglial phagocytosis ability. Notably, we showed that in contrast to the deteriorating effect of neuronal knockout of CD2AP in APP/PS1 mice (61), microglial CD2AP deficiency attenuated cognitive defects, synaptic damage, and disease-associated microglia (DAM) in 5xFAD mice at pathological stages (39). We further suggested that one possibility for such a rescuing effect was that CD2AP could interact with the critical microglial survival factor, colony stimulating factor 1 receptor (CSF1R), so that CD2AP deficiency ameliorated the CSF1R signaling-mediated microglial activation and downstream expression of the C1q complement, which is crucial for synapse phagocytosis, and the formation of DAMs triggered by toxic A $\beta$  (Figure 3) (39). The seemingly contradictory data regarding the effects of microglial CD2AP and neuronal CD2AP on A $\beta$  pathologies are likely stem from distinct action mechanisms in each investigated cell type. However, it is also possible that they are caused by different experimental models used in these studies. However, so far, our understanding of the role of CD2AP in microglia and other cell types lags behind that in neurons. There are urgent requirements for elucidating the pathophysiological functions of CD2AP in different cell types and parallelly comparing their contributions to AD.

#### CD2AP Participates in the Integrity of the Blood-Brain Barrier

The blood-brain barrier (BBB) provides a physical barrier to protect the brain from harmful materials in the peripheral environment. The disruption of the BBB can lead to the influx of neurotoxic bloodborne debris, cells, and microbial pathogens into the brain, triggering inflammatory responses and related immune reactions, which may initiate various pathways leading to neurodegenerative diseases such as AD (82–84). MRI studies have shown that the BBB function is impaired in patients with early AD and other neurodegenerative diseases. Analyses of postmortem tissues of AD patient brain tissues also support this conclusion (82). Brain microvascular endothelial cells, which express high levels of CD2AP, are key components of the BBB (85). CD2AP homozygous knockout mice with CD2AP transgene expression in the kidney attenuated their mortality rate. Such mice showed overall normal behaviors. However, they had compromised the integrity of the BBB so intraperitoneally administered pentylenetetrazol increasingly penetrated into the brain to induce seizures in much shorter latency periods in these mice than in con-

trols (85). This finding implicates that abnormal expression of CD2AP in brain microvascular endothelial cells, if any, may lead to BBB dysfunction and facilitate AD progression.

#### Conclusion

CD2AP is intricately involved in intracellular protein transport and degradation, vesicle trafficking, cell signaling, and cytoskeleton remodeling. As a risk factor for AD, abnormalities in CD2AP in the nervous system may contribute to the pathogenesis of AD through various mechanisms, including influencing the transport and processing of APP and thus A $\beta$  generation, participating in Tau-mediated neurotoxicity, disrupting synaptic function and vesicle release, modulating microglial activation, and compromising the integrity of the BBB. However, the specific molecular mechanisms by which CD2AP participates in these processes have yet to be fully elucidated. Moreover, CD2AP in different neural cell types may have contradictory effects on AD pathologies. Further detailed research into the pathophysiological roles of CD2AP in the nervous system, especially in various cell types, will provide new insights into the pathogenesis of AD. With a comprehensive understanding of the exact pathophysiological functions of CD2AP in different neural cells, it is also possible to design cell type-specific drugs to promote CD2AP levels in those whose CD2AP deficiency is pathogenic (e.g., neurons) and to reduce CD2AP levels in those whose CD2AP elevation is pathogenic (e.g., microglia) as potential therapeutic approaches for AD.

#### Author Contributions

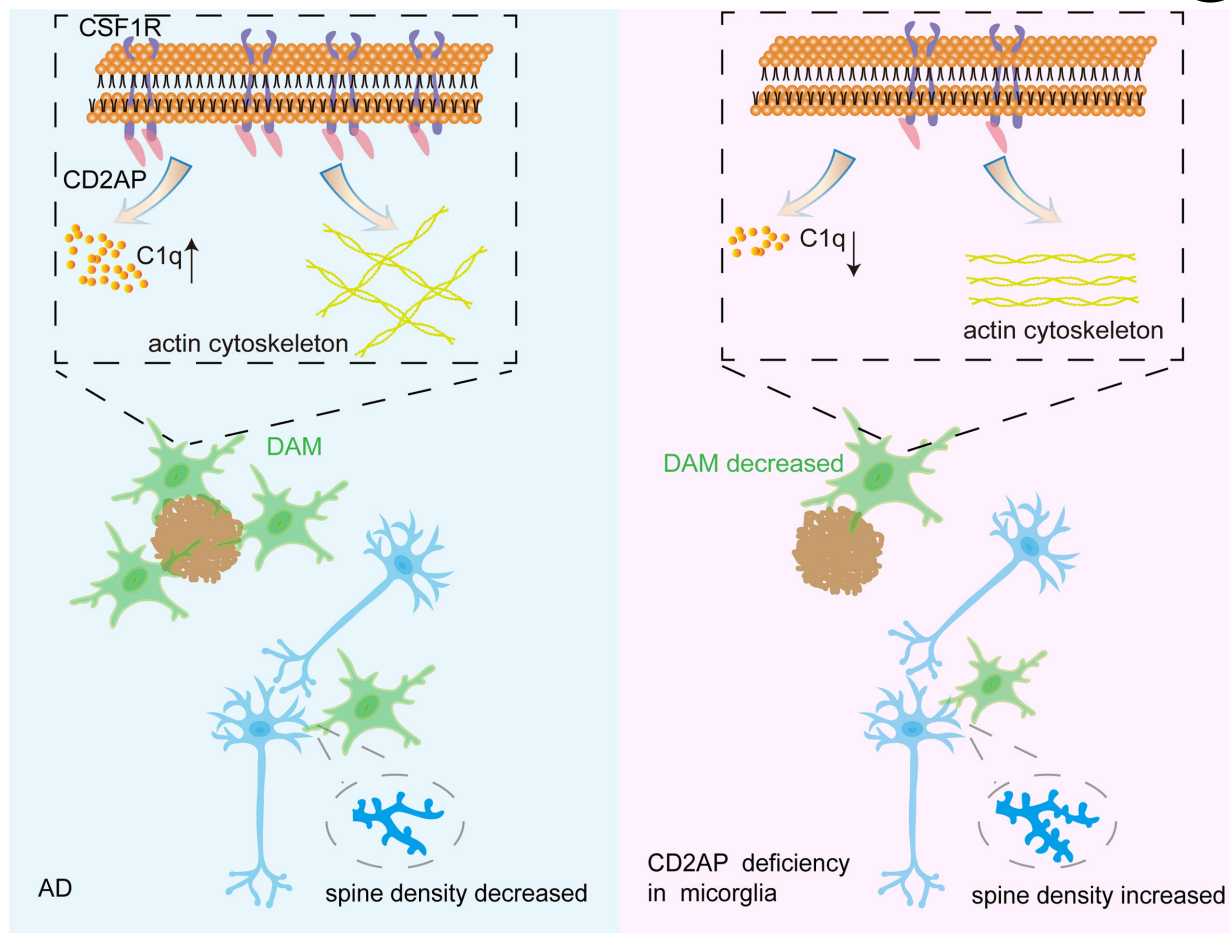
Y.W. wrote a draft. Y.-w.Z. reviewed and revised the manuscript.

All authors have read and approved the manuscript. All authors take full responsibility for all data, figures, and text and approve the study's content and submission. No related work is under consideration elsewhere. All authors state that all unprocessed data are available, and all figures accurately present the original data.

Corresponding author: Professor YwZ for any aspect of the work. This corresponding author takes full responsibility for the submission process.

#### Funding Sources

This work was supported by grants from the National Natural Science Foundation of China (U21A20361 and 82130039), the Lingang Laboratory



**Figure 3.** Impact of CD2AP deficiency in microglia in AD. Microglial CD2AP levels are increased in AD, leading to elevated CSF1R signaling and C1q expression and cytoskeleton remodeling in microglia, resulting in the formation of disease-associated microglia (DAM) and elevated microglial phagocytosis of synapses. CD2AP deficiency in microglia attenuated these changes to protect against AD.

(LG-GG-202401-ADA030200), State Key Laboratory of Vaccines for Infectious Diseases, Xiang An Biomedicine Laboratory (2023XAKJ0102054), and the Key Scientific Research Project for Health and Hygiene of Fujian Province (2023QNZD018).

#### Author Disclosures

The authors have confirmed that no conflict of interest exists.

#### References

1. Lv X, Cheng Z, Wang Q, Gao F, Dai L, Du C, et al. High burdens of phosphorylated tau protein and distinct precuneus atrophy in sporadic early-onset Alzheimer's disease. *Sci Bull (Beijing)*. 2023;68(22):2817–26. DOI: [10.1016/j.scib.2023.10.019](https://doi.org/10.1016/j.scib.2023.10.019). PMID: 37919158
2. Alzheimer's Disease International. World Alzheimer report 2024: executive summary. 2024.
3. Ayodele T, Rogaeva E, Kurup JT, Beecham G, Reitz C. Early-onset Alzheimer's disease: what is missing in research? *Curr Neurol Neurosci Rep*. 2021;21(2):4. DOI: [10.1007/s11910-020-01090-y](https://doi.org/10.1007/s11910-020-01090-y). PMID: 33464407; PMCID: [PMC7815616](https://pubmed.ncbi.nlm.nih.gov/PMC7815616/)
4. Kennedy JL, Farrer LA, Andreasen NC, Mayeux R, St George-Hyslop P. The genetics of adult-onset neuropsychiatric disease: complexities and conundra? *Science*. 2003;302(5646):822–6. DOI: [10.1126/science.1092132](https://doi.org/10.1126/science.1092132). PMID: 14593167
5. Lanoiselée HM, Nicolas G, Wallon D, Rovelet-Lecrux A, Lacour M, Rousseau S, et al. APP, PSEN1, and PSEN2 mutations in early-onset Alzheimer disease: a genetic screening study of familial and sporadic cases. *PLoS Med*. 2017;14(3):e1002270. DOI: [10.1371/journal.pmed.1002270](https://doi.org/10.1371/journal.pmed.1002270). PMID: 28350801; PMCID: [PMC5370101](https://pubmed.ncbi.nlm.nih.gov/PMC5370101/)
6. Laws SM, Hone E, Gandy S, Martins RN. Expanding the association between the APOE gene and the risk of Alzheimer's disease: possible roles for APOE promoter polymorphisms and alterations in APOE transcription. *J Neurochem*. 2003; 84(6):1215–36. DOI: [10.1046/j.1471-4159.2003.01615.x](https://doi.org/10.1046/j.1471-4159.2003.01615.x). PMID: 12614323
7. Liu CC, Liu CC, Kanekiyo T, Xu H, Bu G. Apolipoprotein E and Alzheimer disease: risk, mechanisms and therapy. *Nat Rev Neurol*. 2013;9(2):106–18. DOI: [10.1038/nrneurol.2012.263](https://doi.org/10.1038/nrneurol.2012.263). PMID: 23296339; PMCID: [PMC3726719](https://pubmed.ncbi.nlm.nih.gov/PMC3726719/)
8. Naj AC, Jun G, Beecham GW, Wang L-S, Vardarajan BN, Buross J, et al. Common variants at MS4A4/MS4A6E, CD2AP, CD33 and EPHA1 are associated with late-onset Alzheimer's disease. *Nat Genet*. 2011;43(5):436–41. DOI: [10.1038/ng.801](https://doi.org/10.1038/ng.801). PMID: 21460841; PMCID: [PMC3090745](https://pubmed.ncbi.nlm.nih.gov/PMC3090745/)
9. Hollingworth P, Harold D, Sims R, Gerrish A, Lambert JC, Carrasquillo MM, et al. Common variants at ABCA7, MS4A6A/MS4A4E, EPHA1, CD33 and CD2AP are associated with Alzheimer's disease. *Nat Genet*. 2011;43(5):429–35. DOI: [10.1038/ng.803](https://doi.org/10.1038/ng.803). PMID: 21460840; PMCID: [PMC3084173](https://pubmed.ncbi.nlm.nih.gov/PMC3084173/)
10. Karch CM, Goate AM. Alzheimer's disease risk genes and mechanisms of disease pathogenesis. *Biol Psychiatry*. 2015;77(1):43–51. DOI: [10.1016/j.biopsych.2014.05.006](https://doi.org/10.1016/j.biopsych.2014.05.006). PMID: 24951455; PMCID: [PMC4234692](https://pubmed.ncbi.nlm.nih.gov/PMC4234692/)
11. Tao QQ, Chen YC, Wu ZY. The role of CD2AP in the pathogenesis of Alzheimer's Disease. *Aging Dis*. 2019;10(4):901–7. DOI: [10.14336/ad.2018.1025](https://doi.org/10.14336/ad.2018.1025). PMID: 31440393; PMCID: [PMC6675523](https://pubmed.ncbi.nlm.nih.gov/PMC6675523/)
12. Dustin ML, Olszowy MW, Holdorf AD, Li J, Bromley S, Desai N, et al. A novel adaptor protein orchestrates receptor patterning and cytoskeletal polarity in T-cell contacts. *Cell*. 1998;94(5):667–77. DOI: [10.1016/S0092-8674\(00\)81608-6](https://doi.org/10.1016/S0092-8674(00)81608-6). PMID: 9741631
13. Jumper J, Evans R, Pritzel A, Green T, Figurnov M, Ronneberger O, et al. Highly accurate protein structure prediction with AlphaFold. *Nature*. 2021;596(7873):583–9. DOI: [10.1038/s41586-021-03819-2](https://doi.org/10.1038/s41586-021-03819-2). PMID: 34265844; PMCID: [PMC8371605](https://pubmed.ncbi.nlm.nih.gov/PMC8371605/)
14. Varadi M, Bertoni D, Magana P, Paramval U, Piduchna I, Radhakrishnan M, et al. AlphaFold protein structure database in 2024: providing structure coverage for over 214 million protein sequences. *Nucleic Acids Res*. 2024; 52(D1):D368–75. DOI: [10.1093/nar/gkad1011](https://doi.org/10.1093/nar/gkad1011). PMID: 37933859; PMCID: [PMC10767828](https://pubmed.ncbi.nlm.nih.gov/PMC10767828/)



15. Ortega Roldan JL, Romero Romero ML, Ora A, Ab E, Lopez Mayorga O, Azuaga AI, et al. The high resolution NMR structure of the third SH3 domain of CD2AP. *J Biomol NMR*. 2007;39(4):331–6. DOI: [10.1007/s10858-007-9201-7](https://doi.org/10.1007/s10858-007-9201-7). PMID: 17922258
16. Yao B, Zhang J, Dai H, Sun J, Jiao Y, Tang Y, et al. Solution structure of the second SH3 domain of human CMS and a newly identified binding site at the C-terminus of c-Cbl. *Biochim Biophys Acta*. 2007;1774(1):35–43. DOI: [10.1016/j.bbapap.2006.09.018](https://doi.org/10.1016/j.bbapap.2006.09.018). PMID: 17188587
17. Borinstein SC, Hyatt MA, Sykes VW, Straub RE, Lipkowitz S, Boulter J, et al. SETA is a multifunctional adapter protein with three SH3 domains that binds Grb2, Cbl, and the novel SB1 proteins. *Cell Signal*. 2000;12(11–12):769–79. DOI: [10.1016/S0898-6568\(00\)00129-7](https://doi.org/10.1016/S0898-6568(00)00129-7). PMID: 11152963
18. Gu W, Helms V. Dynamical binding of proline-rich peptides to their recognition domains. *Biochim Biophys Acta*. 2005;1754(1–2):232–8. DOI: [10.1016/j.bbapap.2005.07.033](https://doi.org/10.1016/j.bbapap.2005.07.033). PMID: 16203190
19. Cormont M, Metón I, Mari M, Monzo P, Keslair F, Gaskin C, et al. CD2AP/CMS regulates endosome morphology and traffic to the degradative pathway through its interaction with Rab4 and c-Cbl. *Traffic*. 2003;4(2):97–112. DOI: [10.1034/j.1600-0854.2003.40205.x](https://doi.org/10.1034/j.1600-0854.2003.40205.x). PMID: 12559036
20. Cummins TD, Wu KZL, Bozatz P, Dingwell KS, Macartney TJ, Wood NT, et al. PAWS1 controls cytoskeletal dynamics and cell migration through association with the SH3 adaptor CD2AP. *J Cell Sci*. 2018;131(1):jcs202390. DOI: [10.1242/jcs.202390](https://doi.org/10.1242/jcs.202390). PMID: 29175910; PMCID: [PMC5818054](https://pubmed.ncbi.nlm.nih.gov/PMC5818054/)
21. Adair BD, Altintas MM, Möller CC, Arnaout MA, Reiser J. Structure of the kidney slit diaphragm adapter protein CD2-associated protein as determined with electron microscopy. *J Am Soc Nephrol*. 2014;25(7):1465–73. DOI: [10.1681/asn.2013090949](https://doi.org/10.1681/asn.2013090949). PMID: 24511139; PMCID: [PMC4073441](https://pubmed.ncbi.nlm.nih.gov/PMC4073441/)
22. Bruck S, Huber TB, Ingham RJ, Kim K, Niederstrasser H, Allen PM, et al. Identification of a novel inhibitory actin-capping protein binding motif in CD2-associated protein. *J Biol Chem*. 2006;281(28):19196–203. DOI: [10.1074/jbc.M600166200](https://doi.org/10.1074/jbc.M600166200). PMID: 16707503; PMCID: [PMC2581424](https://pubmed.ncbi.nlm.nih.gov/PMC2581424/)
23. Cooper JA, Sept D. New insights into mechanism and regulation of actin capping protein. *Int Rev Cell Mol Biol*. 2008;267:183–206. DOI: [10.1016/S1937-6448\(08\)00604-7](https://doi.org/10.1016/S1937-6448(08)00604-7). PMID: 18544499; PMCID: [PMC2583073](https://pubmed.ncbi.nlm.nih.gov/PMC2583073/)
24. Li C, Ruotsalainen V, Tryggvason K, Shaw AS, Miner JH. CD2AP is expressed with nephrin in developing podocytes and is found widely in mature kidney and elsewhere. *Am J Physiol Renal Physiol*. 2000;279(4):F785–92. DOI: [10.1152/ajprenal.2000.279.4.F785](https://doi.org/10.1152/ajprenal.2000.279.4.F785). PMID: 10997929
25. Wolf G, Stahl RA. CD2-associated protein and glomerular disease. *Lancet*. 2003;362(9397):1746–8. DOI: [10.1016/S0140-6736\(03\)14856-8](https://doi.org/10.1016/S0140-6736(03)14856-8). PMID: 14643126
26. Shih NY, Li J, Cotran R, Mundel P, Miner JH, Shaw AS. CD2AP localizes to the slit diaphragm and binds to nephrin via a novel C-terminal domain. *Am J Pathol*. 2001;159(6):2303–8. DOI: [10.1016/S0002-9440\(10\)63080-5](https://doi.org/10.1016/S0002-9440(10)63080-5). PMID: 11733379; PMCID: [PMC1850607](https://pubmed.ncbi.nlm.nih.gov/PMC1850607/)
27. Shih NY, Li J, Karpitskii V, Nguyen A, Dustin ML, Kanagawa O, et al. Congenital nephrotic syndrome in mice lacking CD2-associated protein. *Science*. 1999;286(5438):312–5. DOI: [10.1126/science.286.5438.312](https://doi.org/10.1126/science.286.5438.312). PMID: 10514378
28. Tienari J, Lehtonen S, Lehtonen E. CD2-associated protein in human urogenital system and in adult kidney tumours. *Virchows Arch*. 2005;446(4):394–401. DOI: [10.1007/s00428-004-1166-2](https://doi.org/10.1007/s00428-004-1166-2). PMID: 15785926
29. Chen C, Xu J, Zhang JX, Chen LY, Wei YA, Zhang WM, et al. CD2AP is a potential prognostic biomarker of renal clear cell carcinoma. *Cancer Med*. 2024;13(4):e7055. DOI: [10.1002/cam4.7055](https://doi.org/10.1002/cam4.7055). PMID: 38457255; PMCID: [PMC10923042](https://pubmed.ncbi.nlm.nih.gov/PMC10923042/)
30. Kurilla A, László L, Takács T, Tilajka Á, Lukács L, Novák J, et al. Studying the association of TK54 and CD2AP scaffold proteins and their implications in the partial epithelial-mesenchymal transition (EMT) process. *Int J Mol Sci*. 2023;24(20):15136. DOI: [10.3390/ijms242015136](https://doi.org/10.3390/ijms242015136). PMID: 37894817; PMCID: [PMC10606890](https://pubmed.ncbi.nlm.nih.gov/PMC10606890/)
31. Xie W, Chen C, Han Z, Huang J, Liu X, Chen H, et al. CD2AP inhibits metastasis in gastric cancer by promoting cellular adhesion and cytoskeleton assembly. *Mol Carcinog*. 2020;59(4):339–52. DOI: [10.1002/mc.23158](https://doi.org/10.1002/mc.23158). PMID: 31989722; PMCID: [PMC7078920](https://pubmed.ncbi.nlm.nih.gov/PMC7078920/)
32. Zhang L, He J, Zhao W, Zhou Y, Li J, Li S, et al. CD2AP promotes the progression of glioblastoma multiforme via TRIM5-mediated NF-κB signaling. *Cell Death Dis*. 2024;15(10):722. DOI: [10.1038/s41419-024-07094-7](https://doi.org/10.1038/s41419-024-07094-7). PMID: 39353894; PMCID: [PMC11445578](https://pubmed.ncbi.nlm.nih.gov/PMC11445578/)
33. Zhang Y, Chen K, Sloan SA, Bennett ML, Scholze AR, O'Keefe S, et al. An RNA-sequencing transcriptome and splicing database of glia, neurons, and vascular cells of the cerebral cortex. *J Neurosci*. 2014;34(36):11929–47. DOI: [10.1523/JNEUROSCI.1860-14.2014](https://doi.org/10.1523/JNEUROSCI.1860-14.2014). PMID: 25186741; PMCID: [PMC4152602](https://pubmed.ncbi.nlm.nih.gov/PMC4152602/)
34. Ubelmann F, Burriinha T, Salavessa L, Gomes R, Ferreira C, Moreno N, et al. Bin1 and CD2AP polarise the endocytic generation of beta-amyloid. *EMBO Rep*. 2017;18(1):102–22. DOI: [10.15252/embr.201642738](https://doi.org/10.15252/embr.201642738). PMID: 27895104; PMCID: [PMC5210085](https://pubmed.ncbi.nlm.nih.gov/PMC5210085/)
35. Peitsch WK, Hofmann I, Endlich N, Prätzel S, Kuhn C, Spring H, et al. Cell biological and biochemical characterization of drebrin complexes in mesangial cells and podocytes of renal glomeruli. *J Am Soc Nephrol*. 2003;14(6):1452–63. DOI: [10.1097/01.asn.0000069222.63700.de](https://doi.org/10.1097/01.asn.0000069222.63700.de). PMID: 12761245
36. Pavešćović M, De-Paula RB, Ojelade SA, Tantry EK, Kochukov MY, Bao S, et al. Alzheimer's disease risk gene CD2AP is a dose-sensitive determinant of synaptic structure and plasticity. *Hum Mol Genet*. 2024;33(20):1815–32. DOI: [10.1093/hmg/ddae115](https://doi.org/10.1093/hmg/ddae115). PMID: 39146503; PMCID: [PMC11458016](https://pubmed.ncbi.nlm.nih.gov/PMC11458016/)
37. Mirfakhkar FS, Castanheira J, Domingues R, Ramalho JS, Guimas Almeida C. The Alzheimer's disease risk gene CD2AP functions in dendritic spines by remodeling F-actin. *J Neurosci*. 2024;44(48):e1734232024. DOI: [10.1523/jneurosci.1734-23.2024](https://doi.org/10.1523/jneurosci.1734-23.2024). PMID: 39406515; PMCID: [PMC11604147](https://pubmed.ncbi.nlm.nih.gov/PMC11604147/)
38. Ojelade SA, Lee TV, Giagtzoglou N, Yu L, Ugru B, Li Y, et al. cindr, the Drosophila Homolog of the CD2AP Alzheimer's Disease risk gene, is required for synaptic transmission and proteostasis. *Cell Rep*. 2019;28(7):1799–813.e5. DOI: [10.1016/j.celrep.2019.07.041](https://doi.org/10.1016/j.celrep.2019.07.041). PMID: 31412248; PMCID: [PMC6703184](https://pubmed.ncbi.nlm.nih.gov/PMC6703184/)
39. Zhang L, Huang L, Zhou Y, Meng J, Zhang L, Zhou Y, et al. Microglial CD2AP deficiency exerts protection in an Alzheimer's disease model of amyloidosis. *Mol Neurodegener*. 2024;19(1):95. DOI: [10.1186/s13024-024-00789-7](https://doi.org/10.1186/s13024-024-00789-7). PMID: 39695808; PMCID: [PMC11658232](https://pubmed.ncbi.nlm.nih.gov/PMC11658232/)
40. Chen H, Wu G, Jiang Y, Feng R, Liao M, Zhang L, et al. Analyzing 54,936 samples supports the association between CD2AP rs9349407 polymorphism and Alzheimer's disease susceptibility. *Mol Neurobiol*. 2015;52(1):1–7. DOI: [10.1007/s12035-014-8834-2](https://doi.org/10.1007/s12035-014-8834-2). PMID: 25092125
41. Jiao B, Liu X, Zhou L, Wang MH, Zhou Y, Xiao T, et al. Polygenic analysis of late-onset Alzheimer's disease from mainland China. *PLoS One*. 2015;10(12):e0144898. DOI: [10.1371/journal.pone.0144898](https://doi.org/10.1371/journal.pone.0144898). PMID: 26680604; PMCID: [PMC4683047](https://pubmed.ncbi.nlm.nih.gov/PMC4683047/)
42. Tao QQ, Liu ZJ, Sun YM, Li HL, Yang P, Liu DS, et al. Decreased gene expression of CD2AP in Chinese patients with sporadic Alzheimer's disease. *Neurobiol Aging*. 2017;56:212.e5–10. DOI: [10.1016/j.neurobiolaging.2017.03.013](https://doi.org/10.1016/j.neurobiolaging.2017.03.013). PMID: 28392172
43. Tan L, Yu JT, Zhang W, Wu ZC, Zhang Q, Liu QY, et al. Association of GWAS-linked loci with late-onset Alzheimer's disease in a northern Han Chinese population. *Alzheimers Dement*. 2013;9(5):546–53. DOI: [10.1016/j.jalz.2012.08.007](https://doi.org/10.1016/j.jalz.2012.08.007). PMID: 23232270
44. Logue MW, Schu M, Vardarajan BN, Buross J, Green RC, Go RC, et al. A comprehensive genetic association study of Alzheimer disease in African Americans. *Arch Neurol*. 2011;68(12):1569–79. DOI: [10.1001/archneurol.2011.646](https://doi.org/10.1001/archneurol.2011.646). PMID: 22159054; PMCID: [PMC3356921](https://pubmed.ncbi.nlm.nih.gov/PMC3356921/)
45. Carrasquillo MM, Belbin O, Hunter TA, Ma L, Bisceglia GD, Zou F, et al. Replication of EPHA1 and CD33 associations with late-onset Alzheimer's disease: a multi-centre case-control study. *Mol Neurodegener*. 2011;6(1):54. DOI: [10.1186/1750-1326-6-54](https://doi.org/10.1186/1750-1326-6-54). PMID: 21798052; PMCID: [PMC3157442](https://pubmed.ncbi.nlm.nih.gov/PMC3157442/)
46. Miyashita A, Koike A, Jun G, Wang LS, Takahashi S, Matsubara E, et al. SORL1 is genetically associated with late-onset Alzheimer's disease in Japanese, Koreans and Caucasians. *PLoS One*. 2013;8(4):e58618. DOI: [10.1371/journal.pone.0058618](https://doi.org/10.1371/journal.pone.0058618). PMID: 23565137; PMCID: [PMC3614978](https://pubmed.ncbi.nlm.nih.gov/PMC3614978/)
47. Shulman JM, Chen K, Keenan BT, Chibnik LB, Fleisher A, Thiyyagura P, et al. Genetic susceptibility for Alzheimer disease neuritic plaque pathology. *JAMA Neurol*. 2013;70(9):1150–7. DOI: [10.1001/jamaneurol.2013.2815](https://doi.org/10.1001/jamaneurol.2013.2815). PMID: 23836404; PMCID: [PMC3773291](https://pubmed.ncbi.nlm.nih.gov/PMC3773291/)
48. Zhou X, Chen Y, Mok KY, Zhao Q, Chen K, Chen Y, et al. Identification of genetic risk factors in the Chinese population implicates a role of immune system in Alzheimer's disease pathogenesis. *Proc Natl Acad Sci USA*. 2018;115(8):1697–706. DOI: [10.1073/pnas.1715554115](https://doi.org/10.1073/pnas.1715554115). PMID: 29432188; PMCID: [PMC5828602](https://pubmed.ncbi.nlm.nih.gov/PMC5828602/)
49. Lambert JC, Ibrahim-Verbaas CA, Harold D, Naj AC, Sims R, Bellenguez C, et al. Meta-analysis of 74,046 individuals identifies 11 new susceptibility loci for Alzheimer's disease. *Nat Genet*. 2013;45(12):1452–8. DOI: [10.1038/ng.2802](https://doi.org/10.1038/ng.2802). PMID: 24162737; PMCID: [PMC3896259](https://pubmed.ncbi.nlm.nih.gov/PMC3896259/)
50. Vardarajan BN, Ghani M, Kahn A, Sheikh S, Sato C, Barral S, et al. Rare coding mutations identified by sequencing of Alzheimer disease genome-wide association studies loci. *Ann Neurol*. 2015;78(3):487–98. DOI: [10.1002/ana.24466](https://doi.org/10.1002/ana.24466). PMID: 26101835; PMCID: [PMC4546546](https://pubmed.ncbi.nlm.nih.gov/PMC4546546/)
51. Yan Y, Zhao A, Qui Y, Li Y, Yan R, Wang Y, et al. Genetic association of FERMT2, HLA-DRB1, CD2AP, and PTK2B polymorphisms with Alzheimer's disease risk in the southern Chinese population. *Front Aging Neurosci*. 2020;12:16. DOI: [10.3389/fnagi.2020.00016](https://doi.org/10.3389/fnagi.2020.00016). PMID: 32116649; PMCID: [PMC7010721](https://pubmed.ncbi.nlm.nih.gov/PMC7010721/)
52. Johnson ECB, Carter EK, Dammer EB, Duong DM, Gerasimov ES, Liu Y, et al. Large-scale deep multi-layer analysis of Alzheimer's disease brain reveals strong proteomic disease-related changes not observed at the RNA level. *Nat Neurosci*. 2022;25(2):213–25. DOI: [10.1038/s41593-021-00999-y](https://doi.org/10.1038/s41593-021-00999-y). PMID: 35115731; PMCID: [PMC8825285](https://pubmed.ncbi.nlm.nih.gov/PMC8825285/)
53. Shen R, Zhao X, He L, Ding Y, Xu W, Lin S, et al. Upregulation of RIN3 induces endosomal dysfunction in Alzheimer's disease. *Transl Neurodegener*.





- 2020;9(1):26. DOI: [10.1186/s40035-020-00206-1](https://doi.org/10.1186/s40035-020-00206-1). PMID: 32552912; PMCID: [PMC7301499](https://pubmed.ncbi.nlm.nih.gov/PMC7301499/)
54. Tan MS, Yang YX, Xu W, Wang HF, Tan L, Zuo CT, et al. Associations of Alzheimer's disease risk variants with gene expression, amyloidosis, tauopathy, and neurodegeneration. *Alzheimers Res Ther.* 2021;13(1):15. DOI: [10.1186/s13195-020-00755-7](https://doi.org/10.1186/s13195-020-00755-7). PMID: 33419465; PMCID: [PMC7792349](https://pubmed.ncbi.nlm.nih.gov/PMC7792349/)
  55. Bursavich MG, Harrison BA, Blain JF. Gamma Secretase modulators: new Alzheimer's drugs on the horizon? *J Med Chem.* 2016;59(16):7389–409. DOI: [10.1021/acs.jmedchem.5b01960](https://doi.org/10.1021/acs.jmedchem.5b01960). PMID: 27007185
  56. Zhang Y, Chen H, Li R, Sterling K, Song W. Amyloid  $\beta$ -based therapy for Alzheimer's disease: challenges, successes and future. *Signal Transduct Target Ther.* 2023;8(1):248. DOI: [10.1038/s41392-023-01484-7](https://doi.org/10.1038/s41392-023-01484-7). PMID: 37386015; PMCID: [PMC10310781](https://pubmed.ncbi.nlm.nih.gov/PMC10310781/)
  57. Nalivaeva NN, Turner AJ. The amyloid precursor protein: a biochemical enigma in brain development, function and disease. *FEBS Lett.* 2013;587(13):2046–54. DOI: [10.1016/j.febslet.2013.05.010](https://doi.org/10.1016/j.febslet.2013.05.010). PMID: 23684647
  58. Guo T, Zhang D, Zeng Y, Huang TY, Xu H, Zhao Y. Molecular and cellular mechanisms underlying the pathogenesis of Alzheimer's disease. *Mol Neurodegener.* 2020;15(1):40. DOI: [10.1186/s13024-020-00391-7](https://doi.org/10.1186/s13024-020-00391-7). PMID: 32677986; PMCID: [PMC7364557](https://pubmed.ncbi.nlm.nih.gov/PMC7364557/)
  59. Furusawa K, Takasugi T, Chiu YW, Hori Y, Tomita T, Fukuda M, et al. CD2-associated protein (CD2AP) overexpression accelerates amyloid precursor protein (APP) transfer from early endosomes to the lysosomal degradation pathway. *J Biol Chem.* 2019;294(28):10886–99. DOI: [10.1074/jbc.RA118.005385](https://doi.org/10.1074/jbc.RA118.005385). PMID: 31138646; PMCID: [PMC6635452](https://pubmed.ncbi.nlm.nih.gov/PMC6635452/)
  60. Liao F, Jiang H, Srivatsan S, Xiao Q, Lefton KB, Yamada K, et al. Effects of CD2-associated protein deficiency on amyloid- $\beta$  in neuroblastoma cells and in an APP transgenic mouse model. *Mol Neurodegener.* 2015;10:12. DOI: [10.1186/s13024-015-0006-y](https://doi.org/10.1186/s13024-015-0006-y). PMID: 25887956; PMCID: [PMC4374406](https://pubmed.ncbi.nlm.nih.gov/PMC4374406/)
  61. Xue Y-Y, Zhang Z-S, Lin R-R, Huang H-F, Zhu K-Q, Chen D-F, et al. CD2AP deficiency aggravates Alzheimer's disease phenotypes and pathology through p38 MAPK activation. *Transl Neurodegener.* 2024;13(1):64. DOI: [10.1186/s40035-024-00454-5](https://doi.org/10.1186/s40035-024-00454-5). PMID: 39696695; PMCID: [PMC11657702](https://pubmed.ncbi.nlm.nih.gov/PMC11657702/)
  62. Camacho J, Rábano A, Marazuela P, Bonaterra-Pastra A, Serna G, Moliné T, et al. Association of CD2AP neuronal deposits with Braak neurofibrillary stage in Alzheimer's disease. *Brain Pathol.* 2021;32(1):e13016. DOI: [10.1111/bpa.13016](https://doi.org/10.1111/bpa.13016). PMID: 34514662; PMCID: [PMC8713526](https://pubmed.ncbi.nlm.nih.gov/PMC8713526/)
  63. Chibnik LB, White CC, Mukherjee S, Raj T, Yu L, Larson EB, et al. Susceptibility to neurofibrillary tangles: role of the PTPRD locus and limited pleiotropy with other neuropathologies. *Mol Psychiatry.* 2018;23(6):1521–9. DOI: [10.1038/mp.2017.20](https://doi.org/10.1038/mp.2017.20). PMID: 28322283; PMCID: [PMC5608624](https://pubmed.ncbi.nlm.nih.gov/PMC5608624/)
  64. Ramos de Matos M, Ferreira C, Herukka SK, Soininen H, Janeiro A, Santana I, et al. Quantitative genetics validates previous genetic variants and identifies novel genetic players influencing Alzheimer's disease cerebrospinal fluid biomarkers. *J Alzheimers Dis.* 2018;66(2):639–52. DOI: [10.3233/jad-180512](https://doi.org/10.3233/jad-180512). PMID: 30320580
  65. Shulman JM, Imboywa S, Giagtzoglou N, Powers MP, Hu Y, Devenport D, et al. Functional screening in Drosophila identifies Alzheimer's disease susceptibility genes and implicates Tau-mediated mechanisms. *Hum Mol Genet.* 2013;23(4):870–7. DOI: [10.1093/hmg/ddt478](https://doi.org/10.1093/hmg/ddt478). PMID: 24067533; PMCID: [PMC3900103](https://pubmed.ncbi.nlm.nih.gov/PMC3900103/)
  66. Reynolds CH, Nebreda AR, Gibb GM, Utton MA, Anderton BH. Reactivating kinase/p38 phosphorylates tau protein in vitro. *J Neurochem.* 1997;69(1):191–8. DOI: [10.1046/j.1471-4159.1997.69010191.x](https://doi.org/10.1046/j.1471-4159.1997.69010191.x). PMID: 9202310
  67. Cavallini A, Brewerton S, Bell A, Sargent S, Glover S, Hardy C, et al. An unbiased approach to identifying tau kinases that phosphorylate Tau at sites associated with Alzheimer disease. *J Biol Chem.* 2013;288(32):23331–47. DOI: [10.1074/jbc.M113.463984](https://doi.org/10.1074/jbc.M113.463984). PMID: 23798682; PMCID: [PMC3743503](https://pubmed.ncbi.nlm.nih.gov/PMC3743503/)
  68. Shao X, Zhang X, Hu J, Gao T, Chen J, Xu C, et al. Dopamine 1 receptor activation protects mouse diabetic podocytes injury via regulating the PKA/NOX-5/p38 MAPK axis. *Exp Cell Res.* 2020;388(2):111849. DOI: [10.1016/j.yexcr.2020.111849](https://doi.org/10.1016/j.yexcr.2020.111849). PMID: 31954110
  69. Zheng X, Zhong Q, Lin X, Gu X, Ling X, Liang Z, et al. Transforming growth factor-beta1-induced podocyte injury is associated with increased microRNA-155 expression, enhanced inflammatory responses and MAPK pathway activation. *Exp Ther Med.* 2021;21(6):620. DOI: [10.3892/etm.2021.10052](https://doi.org/10.3892/etm.2021.10052). PMID: 33936277; PMCID: [PMC8082603](https://pubmed.ncbi.nlm.nih.gov/PMC8082603/)
  70. Schiffer M, Mundel P, Shaw AS, Bottinger EP. A novel role for the adaptor molecule CD2-associated protein in transforming growth factor-beta-induced apoptosis. *J Biol Chem.* 2004;279(35):37004–12. DOI: [10.1074/jbc.M403534200](https://doi.org/10.1074/jbc.M403534200). PMID: 15213232
  71. Yao PJ. Synaptic frailty and clathrin-mediated synaptic vesicle trafficking in Alzheimer's disease. *Trends Neurosci.* 2004;27(1):24–9. DOI: [10.1016/j.tins.2003.10.012](https://doi.org/10.1016/j.tins.2003.10.012). PMID: 14698607
  72. Terry RD, Masliah E, Salmon DP, Butters N, DeTeresa R, Hill R, et al. Physiological basis of cognitive alterations in Alzheimer's disease: synapse loss is the major correlate of cognitive impairment. *Ann Neurol.* 1991;30(4):572–80. DOI: [10.1002/ana.410300410](https://doi.org/10.1002/ana.410300410). PMID: 1789684
  73. DeKosky ST, Scheff SW. Synapse loss in frontal cortex biopsies in Alzheimer's disease: correlation with cognitive severity. *Ann Neurol.* 1990;27(5):457–64. DOI: [10.1002/ana.410270502](https://doi.org/10.1002/ana.410270502). PMID: 2360787
  74. Tzioras M, McGeachan RI, Durrant CS, Spire-Jones TL. Synaptic degeneration in Alzheimer disease. *Nat Rev Neurol.* 2023;19(1):19–38. DOI: [10.1038/s41582-022-00749-z](https://doi.org/10.1038/s41582-022-00749-z). PMID: 36513730
  75. Zhong L, Sheng X, Wang W, Li Y, Zhuo R, Wang K, et al. TREM2 receptor protects against complement-mediated synaptic loss by binding to complement C1q during neurodegeneration. *Immunity.* 2023;56(8):1794–808.e8. DOI: [10.1016/j.immuni.2023.06.016](https://doi.org/10.1016/j.immuni.2023.06.016). PMID: 37442133
  76. Congdon EE, Sigurdsson EM. Tau-targeting therapies for Alzheimer disease. *Nat Rev Neurol.* 2018;14(7):399–415. DOI: [10.1038/s41582-018-0013-z](https://doi.org/10.1038/s41582-018-0013-z). PMID: 29895964; PMCID: [PMC6463489](https://pubmed.ncbi.nlm.nih.gov/PMC6463489/)
  77. Harrison BJ, Venkat G, Lamb JL, Hutson TH, Drury C, Rau KK, et al. The adaptor protein CD2AP is a coordinator of neurotrophin signaling-mediated axon arbor plasticity. *J Neurosci.* 2016;36(15):4259–75. DOI: [10.1523/jneurosci.2423-15.2016](https://doi.org/10.1523/jneurosci.2423-15.2016). PMID: 27076424; PMCID: [PMC4829650](https://pubmed.ncbi.nlm.nih.gov/PMC4829650/)
  78. Singh D. Astrocytic and microglial cells as the modulators of neuroinflammation in Alzheimer's disease. *J Neuroinflammation.* 2022;19(1):206. DOI: [10.1186/s12974-022-02565-0](https://doi.org/10.1186/s12974-022-02565-0). PMID: 35978311; PMCID: [PMC9382837](https://pubmed.ncbi.nlm.nih.gov/PMC9382837/)
  79. Leng F, Edison P. Neuroinflammation and microglial activation in Alzheimer disease: where do we go from here? *Nat Rev Neurol.* 2021;17(3):157–72. DOI: [10.1038/s41582-020-00435-y](https://doi.org/10.1038/s41582-020-00435-y). PMID: 33318676
  80. Heneka MT, Carson MJ, El Khoury J, Landreth GE, Brosseron F, Feinstein DL, et al. Neuroinflammation in Alzheimer's disease. *Lancet Neurol.* 2015;14(4):388–405. DOI: [10.1016/s1474-4422\(15\)70016-5](https://doi.org/10.1016/s1474-4422(15)70016-5). PMID: 25792098; PMCID: [PMC5909703](https://pubmed.ncbi.nlm.nih.gov/PMC5909703/)
  81. Terzioglu G, Young-Pearse TL. Microglial function, INPP5D/SHIP1 signaling, and NLRP3 inflammasome activation: implications for Alzheimer's disease. *Mol Neurodegener.* 2023;18(1):89. DOI: [10.1186/s13024-023-00674-9](https://doi.org/10.1186/s13024-023-00674-9). PMID: 38017562; PMCID: [PMC10685641](https://pubmed.ncbi.nlm.nih.gov/PMC10685641/)
  82. Sweeney MD, Sagare AP, Zlokovic BV. Blood-brain barrier breakdown in Alzheimer disease and other neurodegenerative disorders. *Nat Rev Neurol.* 2018;14(3):133–50. DOI: [10.1038/nrneuro.2017.188](https://doi.org/10.1038/nrneuro.2017.188). PMID: 29377008; PMCID: [PMC5829048](https://pubmed.ncbi.nlm.nih.gov/PMC5829048/)
  83. Zlokovic BV. Neurovascular pathways to neurodegeneration in Alzheimer's disease and other disorders. *Nat Rev Neurosci.* 2011;12(12):723–38. DOI: [10.1038/nrn3114](https://doi.org/10.1038/nrn3114). PMID: 22048062; PMCID: [PMC4036520](https://pubmed.ncbi.nlm.nih.gov/PMC4036520/)
  84. Sweeney MD, Zhao Z, Montagne A, Nelson AR, Zlokovic BV. Blood-brain barrier: from physiology to disease and back. *Physiol Rev.* 2019;99(1):21–78. DOI: [10.1152/physrev.00050.2017](https://doi.org/10.1152/physrev.00050.2017). PMID: 30280653; PMCID: [PMC6335099](https://pubmed.ncbi.nlm.nih.gov/PMC6335099/)
  85. Cochran JN, Rush T, Buckingham SC, Roberson ED. The Alzheimer's disease risk factor CD2AP maintains blood-brain barrier integrity. *Hum Mol Genet.* 2015;24(23):6667–74. DOI: [10.1093/hmg/ddv371](https://doi.org/10.1093/hmg/ddv371). PMID: 26358779; PMCID: [PMC4634373](https://pubmed.ncbi.nlm.nih.gov/PMC4634373/)

**Publisher's note:** Genomic Press maintains a position of impartiality and neutrality regarding territorial assertions represented in published materials and affiliations of institutional nature. As such, we will use the affiliations provided by the authors, without editing them. Such use simply reflects what the authors submitted to us and it does not indicate that Genomic Press supports any type of territorial assertions.



**Open Access.** This article is licensed to Genomic Press under the Creative Commons Attribution-NonCommercial-NoDerivatives 4.0 International License (CC BY-NC-ND 4.0). The license mandates: (1) Attribution: Credit must be given to the original work, with a link to the license and notification of any changes. The acknowledgment should not imply licensor endorsement. (2) NonCommercial: The material cannot be used for commercial purposes. (3) NoDerivatives: Modified versions of the work cannot be distributed. (4) No additional legal or technological restrictions may be applied beyond those stipulated in the license. Public domain materials or those covered by statutory exceptions are exempt from these terms. This license does not cover all potential rights, such as publicity or privacy rights, which may restrict material use. Third-party content in this article falls under the article's Creative Commons license unless otherwise stated. If use exceeds the license scope or statutory regulation, permission must be obtained from the copyright holder. For complete license details, visit <https://creativecommons.org/licenses/by-nc-nd/4.0/>. The license is provided without warranties.